



Asian Women's Shelter HELP

HELP was founded in 1986 to mark the 100th anniversary of the Japan Christian Women's Organization Kyofukai. HELP provides support for women and their children in need without question of nationality or residency status, offering accommodation and telephone counseling. At the shelter, the majority of residents are fleeing violence and situation of forced prostitution or have lost their homes. Telephone counseling is available for any kind of issue, including personal problems, problems with spouses or partners or children's problems.

To protect the human rights of women and children, we work toward solutions for these various problems, in hopes of making ours a society that values human rights. This is the purpose of our work.

- Anonymous counseling is available.
- The individual's privacy is respected.
- Relevant organizations will be introduced where needed.



Please Support HELP!

HELP is funded mainly
by donations, grants,
and the work of volunteers.
We seek your kind support
and cooperation.



To make donations

Account number for postal transfers :
00110-5-188775

Organization name : Josei no ie HELP

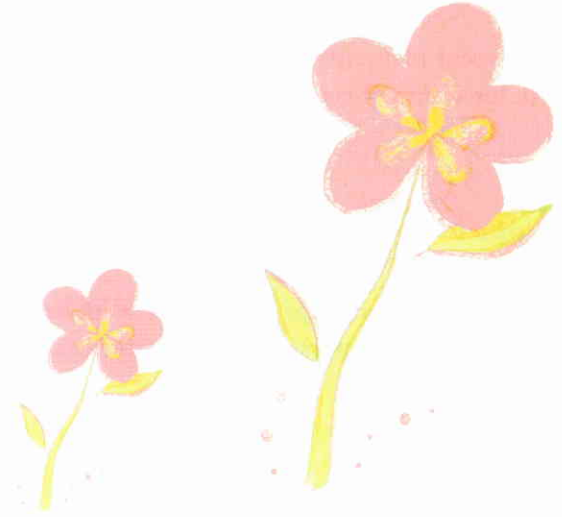
HELP Asian Women's Shelter gratefully acknowledges the support of Nihon Yusei Kosya Nenga Kifukin (JAPAN POST Donation of New Years Greetings) for publishing this leaflet.

Design & Illustration / Akiho Sasaki

KYOFUKAI - Japan Christian Women's Organization

HELP Asian Women's Shelter

Emergency shelter for women and children



House in Emergency
of
Love and Peace

 03-3368-8855

HELP's Important Ideas...

Non-violence & Safety

This is a place of non-violence, where we hold safety and security very important.

We do our best to promote a peaceful and safe environment.

Empowerment

We believe in treating everyone as equals.

We respect residents' freedom of choice and work for a spirit of cooperation.

Diversity & Fellowship

We place important on the diversity of everyone here.

Offering native-language support, we work hard to answer to each person's varying needs and situation.

Partnership

We hold cooperation and collaboration as important ideals.

In cooperation with various related organizations and groups, we work to build a strong network for support and government lobbying.

Love & Peace

We place a great importance on warmth and comfort.

Providing a warm place to sleep and hot meal, we work hard to create a place where everyone can feel comfortable.

HELP's Activities

1 Shelter Activities

First, please let us know your situation by telephone.

The standard length of stay is two weeks.

Accommodation Cost for One Night with Three Meals:

Adult ¥3,500 (meals ¥1,800, room ¥1,700)

Child ¥2,500 (meals ¥1,300, room ¥1,200)

※Please consult the Welfare Office or HELP regarding costs.

※For those bringing children, boys are allowed up to age 10.

※Due to a lack of medical facilities, accommodation may not be available in the case of illness. Please consult HELP beforehand.

2 Free Telephone Consultation

Hours: Monday through Friday, 10am-5pm

Language: Japanese, English, Thai, Tagalong, Spain

(Language available may vary according to day and time.)

Phone number : 03-3368-8855

3 Monthly Orientation

※Those interested in volunteering for HELP, please phone to make arrangements to attend an orientation.

4 Newsletter [HELP Network News]

twice a year

5 Other activities include lecturing, government lobbying, collaboration with local and international related organization, etc.

Published Works:

- 『Kibou no Hikari wo Itsumo Kakagete: 20 Years of Asian Women's Shelter HELP』 (2006)
- 『Asia no Josei ni yotte Nihon no Mondai ga Mietekita: Josei no ie HELP 10 nen no Ayumi』 (1996)

